

**EXTERIOR** With its dark cladding, roof and windows, the house melds seamlessly into its dense rainforest setting. Spotted-gum cladding stained in Porter's Paints Palm Beach. Custom black-framed doors and windows, Byron Glass & Aluminium. Spotted-gum deck. The landscaping is a collaboration between designer Jase Sullivan and landscapers Adam Robinson Design.

# Peace mission

When the opportunity arose to swap the Sydney suburbs for Byron Bay, the owners of this home jumped at the chance – and haven't looked back.

STORY *Chris Pearson* | STYLING *Jase Sullivan* | PHOTOGRAPHY *Michael Lean*



**POOL HOUSE** Jase (pictured opposite) furnished the pool house to feel like a getaway in its own right. Vintage Togo armchair, Organic nesting tables, Italian splatter platter and Italian white face plate, Tigmi Trading. Italian urn, Fossil Vintage. Vintage Bitossi lamp, Rudi Rocket. Artwork by Hunter Amos. Vase by Sasa Scheiner (left), Pack Gallery Studio. White vase by Emma Gale, Nikau Store. Van Diemen's Land rug, Grounded Rugs. Built-in joinery by Custom Kitchens and Interiors. Curtains, Creative Blinds.

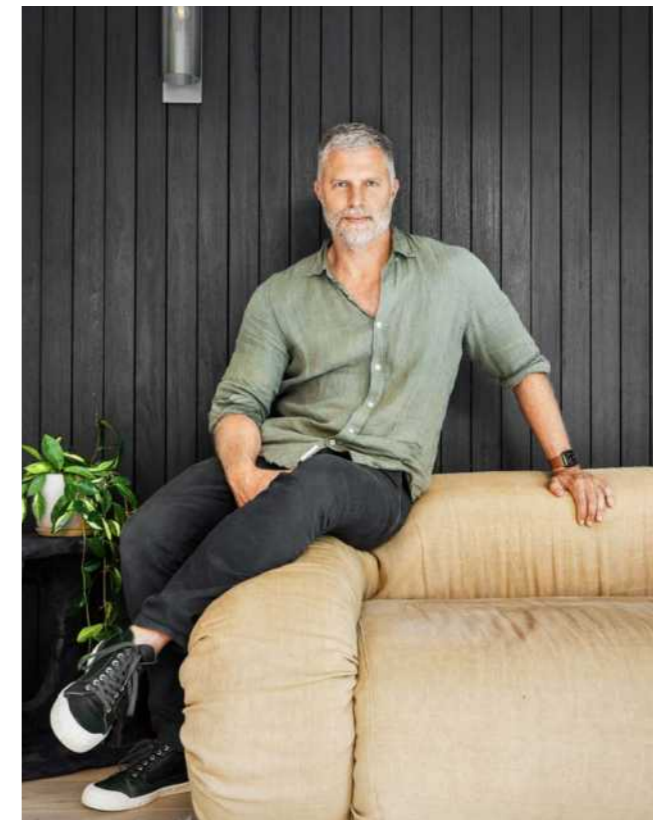
aving moved from Sydney to Byron Bay, on the NSW North Coast, with their young family, the owners of this home have given new meaning to the term 'tree change'. They have put down roots in dense rainforest that's a world away from their former suburban existence and, with this pavilion-style sanctuary, they can enjoy their new-found green paradise year round.

"When we first saw the block, we loved its size and tranquillity," says the owner. "You could sit in the house and feel there was no one around for miles. The beautiful and established tropical gardens and flowing creek evoked the feeling of being in a resort." A turn-of-the-century resort, perhaps, because the 20-something-year-old house was in need of its own life change. "It was dated and wasn't taking full advantage of the beautiful outdoor aspect, with small windows and not enough natural light," she says.

The flow of the spaces was poor, too, beginning with an entry path that stepped awkwardly over several levels. "But we knew we could build on its shortcomings to create a home that kept that relaxed feel, while also incorporating all the conveniences of modern living, taking full advantage of both the indoor and outdoor spaces," she adds.

On a friend's recommendation, the couple hired interior designer Jase Sullivan, recently returned from a stint in LA, to rejig the spaces. "We loved his attention to detail and his relaxed, yet sophisticated style - we felt that would work well for a Byron lifestyle," says the owner. The initially modest brief included opening up the kitchen and revamping the laundry. But Jase, also rapt with the property, persuaded the owners to take on a bit more and help the house realise its full potential.

"The project just grew and grew," he says. "We talked it through and the owners soon realised how fabulous it could be. I said, 'Let's go the whole shebang and make it more contemporary.'"



Jase introduced the owners to his passion for Mid-Century style, and they, becoming as equally enamoured, gave him largely free rein.

Working to a schedule that began in April 2020 and ended last Christmas, Jase reclad the house in dark-stained spotted gum ("You can still see the grain"), so it sits dramatically against that dense foliage. "I wanted to emphasise the garden and the beautiful greenery," he says.

"The house virtually disappears." The entryway, up and down on various levels, was tidied up, by placing it on one level, while a light metal roof was swapped for a darker one.

Meanwhile, he enlarged the windows - originally, a mishmash of plain aluminium and timber - using black aluminium frames throughout for consistency. Most strikingly, along a hallway joining the bedroom wing to the living areas, he installed floor-to-ceiling glass overlooking the garden and a pond.

"We opened up the house," he says. While he left the layout largely untouched, he reconfigured the kitchen, disposing of a return bench to open it up and ensure it connects better with the open plan, and flipped the main bedroom around so the bed enjoys views of the waterfall and creek. Exploiting the different levels, Jase included that ultimate in Mid-Century style, a sunken lounge, complemented by a new stone flagging fireplace, which sizzles with retro cool while also providing a focal point.

The internal palette reflects Jase's name for the project, 'Black and Blonde', immediately apparent in the sophisticated joinery offset by light oak cabinetry and a special plaster finish called tadelakt. Originating from Morocco, it is a lime plaster, which is rammed and then treated with a soap to make it water-repellent. "There's movement in textured timber and tadelakt, unlike plain plasterboard, and I love that contrast of the black and blonde, the light oak joinery, the plaster and the dark joinery," he says.

Passionate about all things Mid-Century, Jase introduced the homeowners to 1950s and 1960s European furniture, which he has peppered throughout the interiors, including Togo ▶

**LIVING ROOM/DEN** Jase's – and now the owners' – passion for Mid-Century classics pervades the home. Anfibio sofa, Castorina & Co. MissoniHome cushions, Spence & Lyda. Vintage shag-pile rug, Vampt Vintage Design. Vintage floor lamp and brass sculpture, Pierre Paulin Mushroom armchair and stool, all Tigmi Trading. Eclipse Short Mid Bronze wall sconce, Articolo Lighting. Artwork by Hunter Amos.

chairs by Michel Ducaroy and Anfibio sofas by Alessandro Becchi. "I am obsessed by Mid-Century design. I also like sustainability and reusing things," he says. These are complemented by the custom sunken lounge and joinery.

That sunken lounge is reprised by two similar seating areas outside, enhancing the holiday feel. "It was so satisfying making the house look like it's a resort," says Jase. "New sunken lounges and a pool house bring the outdoors in, and revitalising the pool area has made a huge difference to the overall look and feel of the property." The landscaping, crafted with Adam Robinson Design, now includes lawn for the youngsters to play.

Relishing her new hideaway, the owner finds it hard to pick a favourite feature. "We love the glimpses of the creek from the study or the kitchen and the view out over the palms from the main bedroom. It's incredibly serene to lie in on the weekend and just have that outlook - the greenery and feeling that close to nature is incredibly relaxing."

*Jase Sullivan, Byron Bay, NSW; [jasesullivan.com.au](http://jasesullivan.com.au).*

*Adam Robinson Design, Woollahra, NSW; (02) 8354 1077 or [adamrobinsondesign.com](http://adamrobinsondesign.com).*

## H&G HOUSES

**DINING** Gathering dining table, Nomi. Vintage dining chairs by Eugen Schmidt, Castorina & Co. Twentytwoyone 'Hotaru' pendant lights, Space. Vintage rug, Tigmi Trading. Yrjo Kukkapuro Karuselli chair, Collectika. Freado timber flooring, Tongue N Groove Flooring.

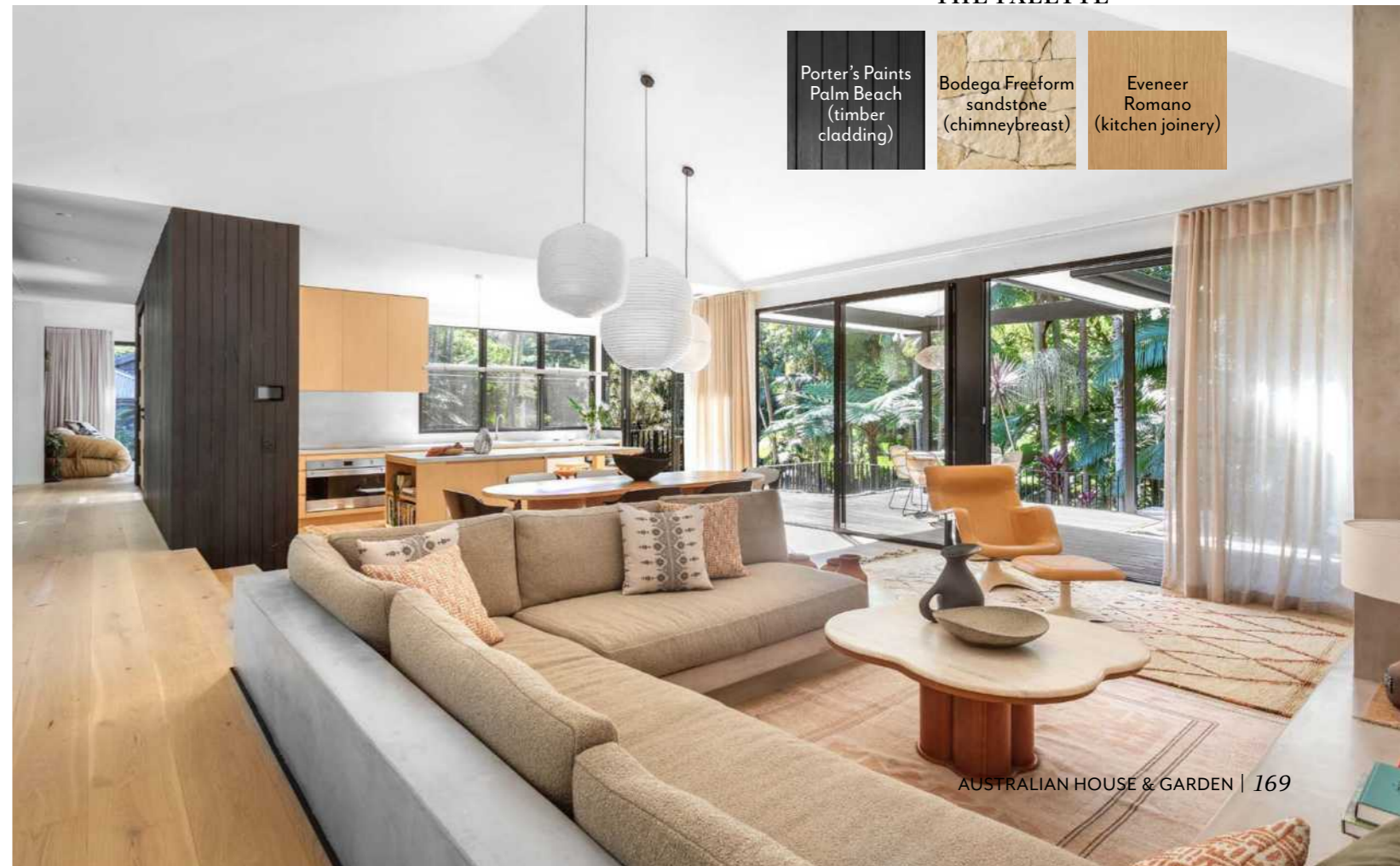
**LIVING** Built-in sofa by Jase Sullivan, upholstered in Westbury Textiles bouclé fabric, made by The Dusty Road. Vintage Jean Royere-style coffee table, vintage rug and Softedge Ewer jug by Layla Cluer, all Tigmi Trading. Lopi fireplace, Barbeques Galore. Bodega Freeform sandstone cladding (on chimneybreast), Eco Outdoor. Vintage Yrjo Kukkapuro Karuselli chair and ottoman, Collectika. 1960s vintage Danish lamp, Angelucci 20th Century. **KITCHEN** Spine stools, Great Dane. Evener 'Romano' veneer joinery by Custom Kitchens and Interiors. Caesarstone Primordia benchtop and splashback. Potter DS pendant light, Anchor Ceramics. ▶



Paint colours are reproduced as accurately as printing processes allow.

## THE PALETTE

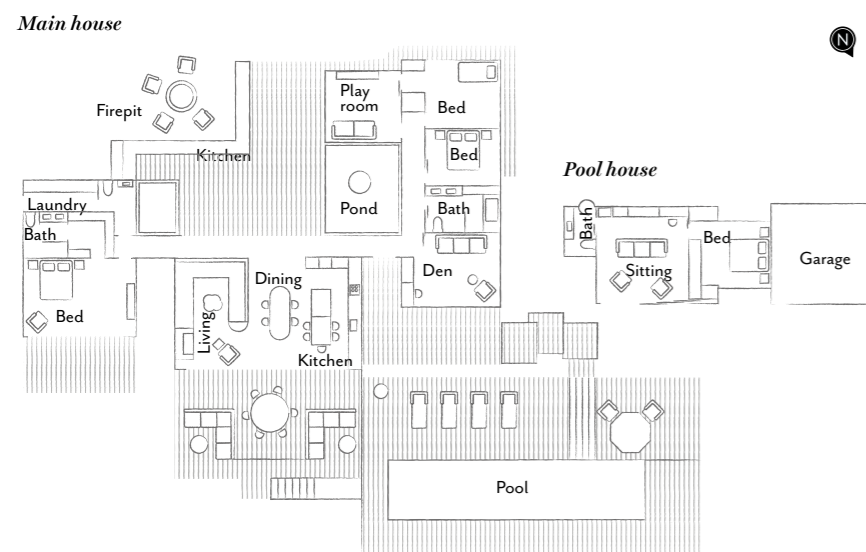
Porter's Paints Palm Beach (timber cladding)	Bodega Freeform sandstone (chimneybreast)	Evener Romano (kitchen joinery)
---	---	---------------------------------------





**FAMILY BATHROOM** *This page* Milli 'Pure' twin rail shower, Reece. Messina floor tiles and Popham Design 'Baguette' wall tiles in Milk, all Onsite Supply+Design. Evener 'Romano' veneer joinery, designed by Jase Sullivan and built by Custom Kitchens and Interiors. **MAIN BEDROOM** Custom bed by Jase Sullivan. Bedside tables designed by Jase Sullivan and made by Custom Kitchens and Interiors. Hale Mercantile Co bedlinen, Island Luxe. Alky chair by Giancarlo Piretti for Castelli, Castorina & Co. Full Moon Griega rug, Grounded Rugs. Domi wall sconces, Articolo Lighting. **MAIN ENSUITE** *Opposite* Popham Design 'Baguette' wall tiles and Messina floor tiles, Onsite Supply+Design. Mizu Drift MK2 handshower and tap, and Milli Pure showerhead, Reece. Louvres, Byron Glass & Aluminium. Hale Mercantile Co towel, Island Luxe. ▶

THE LAYOUT



**POOL** The zoned pool area overlooks generous lawn created for the owners' young family to play on. Loop sunloungers, Harbour 1976. Mood daybed, Cosh Living. Decking in spotted gum. Pool lined in grey pebblecrete.

**THIS IS THE LIFE**

The family spends most of their time in the open-plan area and, now that the weather is warming up, on the deck, around the pool or on one of the outside sunken lounges. But, wherever they are in the home, nature is omnipresent, thanks in part to Jase's changes. And it's so different from their previous life in suburban Sydney. "The whole house has a relaxed vibe, so it's hard not to feel chilled out, no matter where you are," says the owner.



THE SOURCE

*In warmer climates, the combination of white and natural materials is like a cooling breeze...*



1

2



3



4



5



6



7



8



9

10



11



12



Produced by Sophie Wilson.

1 *Washington artwork* by Hunter Amos, POA, Hunter Amos. 2 *Domi wall sconce*, from \$1650, Articolo Lighting. 3 *High Loft pillow*, \$69.95, Dentons. 4 *Motorised curtains* in Southport Merino Sheer, POA, Wynstan. 5 *Hotaru Marker lantern* by Barber & Osgerby for Twentytwentyone, \$625, Space. 6 *Marazion kilim* (4.8x3.15m), \$7500, Tigmi Trading. 7 *Newport Gloss subway tiles* in Bone, \$69/m<sup>2</sup>, TileCloud. 8 *Santo cylindrical pot* by Adam Robinson, \$320, MCM House. 9 *Gerri pot* by Adam Robinson, \$150, MCM House. 10 *Bell Shaped pot* by Adam Robinson, \$590, MCM House. 11 *Tribú 'Nodi' sunlounger*, POA, Cosh Living. 12 *Linen sheet set* in Cedar, \$425/queen size, Cultiver. *For Where to Buy, see page 190. H&G*