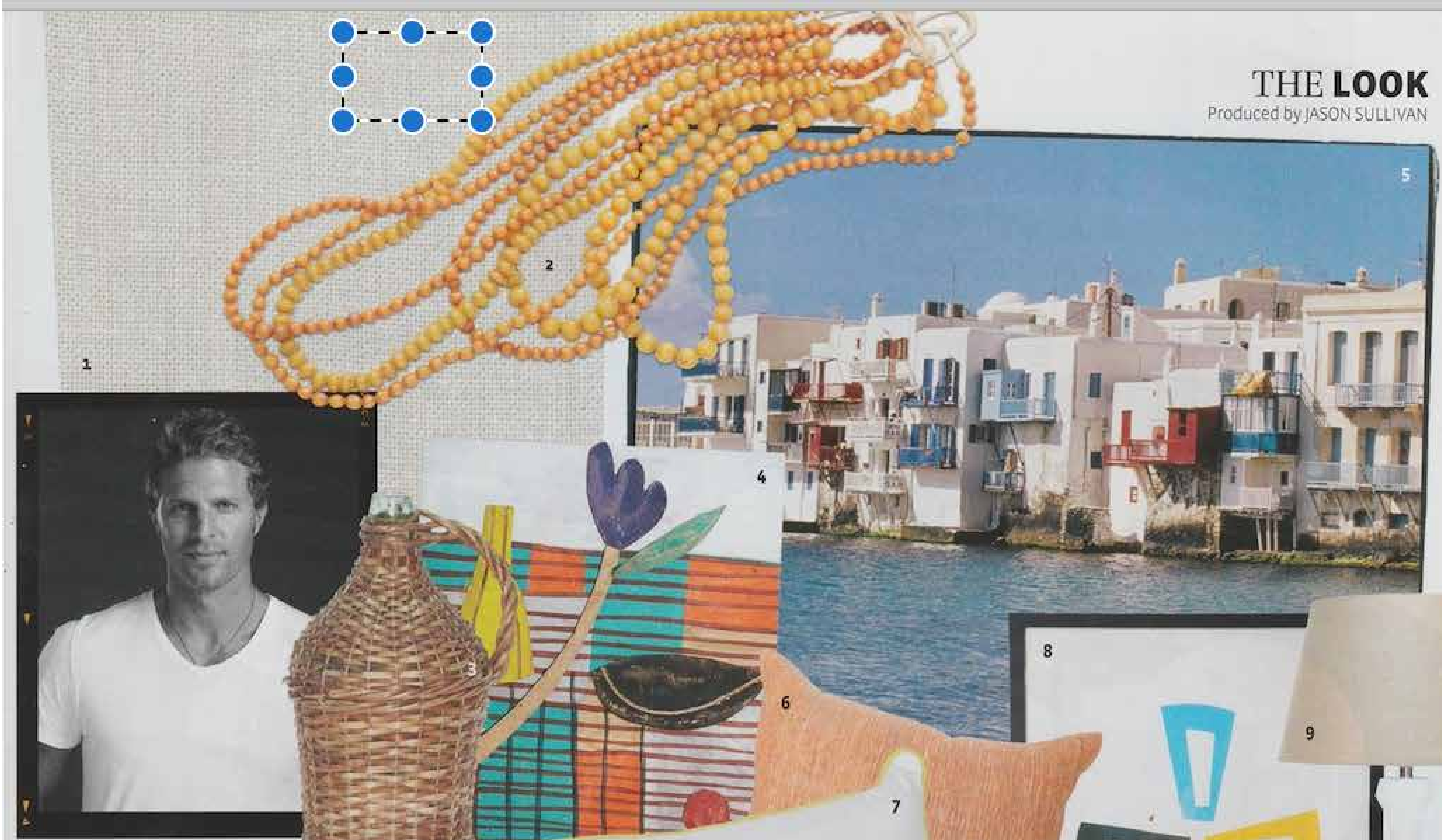


THE LOOK
Produced by JASON SULLIVAN



Bright ideas

A fresh take on classic Greek looks.

FIRST FELL IN LOVE with Mykonos 10 years ago and have visited every year since. It's the classic Greek island – all blue and white, right? That's a strong theme, but when you step inside a local's home you will find it filled with vibrant-coloured accessories – so uplifting. And it's an easy look to recreate as stores are bursting with brightly coloured cushions, urns, artwork, throws and more. Select sun-kissed pieces with a faded or washed-out tone – try burnt orange, aqua, lemon or lime. To soften the look, pair it with white: walls, sofas, linens and sheer curtains that waft in the breeze. End your day with a feast of freshly opened sea urchins and a limoncello aperitif, add some after-dinner dancing on the table and we're there. Hmm, what time of year is it again?

1 Westbury Textiles pure Belgian linen in Birch. **2** Amber beads from Les Interieurs. **3** Wicker demijohn from Alfresco Emporium. **4** Small Flower timber relief by Mark Schaller from Mark Tuckey. **5** Little Venice, Mykonos. **6** Raw silk cushion in Persimmon from Alfresco Emporium. **7** 'Brighton' cushion from Alfresco Emporium. **8** Four Blades print by Rachel Castle from Mark Tuckey. **9** 'Stanton' timber lamp from Alfresco Emporium. **10** Bentwood carver from Mark Tuckey. **11** Glass demijohns from Alfresco Emporium. **12** Mykonos harbour. **13** 'Bambu' large bowl in Apple Green from Hub. **14** Hand-blown glass vase by Mark Schaller from Mark Tuckey. **15** Sisal rug in Orange from Cadrys. **16** Box bed from Mark Tuckey. **17** Wee Jasper crazy paving from Wee Jasper Stone. For stockists see Address Book.



THE LOOK

"TO SOFTEN THE LOOK PAIR IT WITH WHITE: WALLS, SOFAS, LINENS AND SHEER CURTAINS THAT WAFT IN THE BREEZE."



18 Murobond paint in Emerald, Just White and Pacific. **19** 'Saxton' two-piece sofa from Papaya. **20** 'Out of Africa' collection sheer curtain from Elliott Clarke. **21** Stool from Mark Tuckey. **22** Vase, urn and ginger jar from Alfresco Emporium. **23** Pure linen in 7229 from Elliott Clarke. **24** Belvedere Hotel, Mykonos. **25** 'Malawi' chair in Natural from Les Interieurs. **26** Glass candleholder from Illie Home + Gift. **27** Handmade vintage quilts from Mark Tuckey. **28** 'Rimini Blu' centrepiece from Hub. **29** Pure linen in 7303 from Elliott Clarke. **30** 'Ketara' vase in Grey and 'Modernica' vase in Lagoon from Illie Home + Gift. **31** B&B Italia 'Frank' side table from Space. **32** Florence Broadhurst 'Yvan Geometric Sky' natural-wool rug from Cadrys. **33** Indigo corks from Les Interieurs. **34** Tree bark stool in Pale Wood from Illie Home + Gift. **35** 'Pod' hanging chair from Swish. **36** 'Brighton' cushion from Alfresco Emporium. For stockists see Address Book.